

Correct as at 23rd November 2013. It may be superseded at any time.

Extract taken from: NZTA Vehicle Portal > VIRMs > In-service certification (WoF) > General vehicles > Vehicle identification

1 Vehicle identification

1-1 VIN and chassis number

Important Ensure that the VIN or chassis number is recorded in full on the checksheet.

This number must be:

- the VIN if fitted – not the chassis number (locally allocated VIN)
- the stamped VIN on the VIN plate – not the VIN etched on the glazing.

Also refer to **Table 1-1-1. Location of New Zealand VIN numbers, Figure 1-1-1. Structure of a VIN issued by the NZ Transport Agency and Figure 1-1-2. Structure of a VIN issued by the vehicle manufacturer.**

Reasons for rejection

Mandatory requirements

1. A vehicle first registered or re-registered in New Zealand before 1 April 1994 does not have a VIN or chassis number ([Note 1](#)).
2. A vehicle first registered or re-registered in New Zealand from 1 April 1994 does not have a VIN number ([Note 1](#)).
3. A VIN number is not valid ([Note 1](#))([Note 2](#)).

Condition

4. A VIN or chassis number has been ([Note 1](#)):
 - a) removed, or
 - b) erased, or
 - c) altered, or
 - d) defaced, or
 - e) obscured, or
 - f) destroyed, or
 - g) obliterated, or
 - h) affixed unlawfully or by unauthorised persons.

Note 1

The vehicle inspector must notify the Police and the NZTA using the [vehicle report form](#) if there is reason to believe that the VIN or chassis number has been tampered with in any way.

The vehicle inspector must not issue a WoF/CoF/permit until approved by NZTA. Approval will usually include the issue or re-issue of a new VIN plate.

Refer the vehicle to a VIN issuing agent ([VTNZ](#), [VINZ](#), [NZAA](#)). They will inspect the vehicle and seek approval from NZTA to issue or re-issue a VIN plate.

Note 2

A valid VIN is a unique number that has been assigned to the vehicle in the vehicle's country of origin or by a person

appointed by the NZTA. It consists of 17 characters that never contain the letters I, O or Q, and that is capable of being decoded to provide identifying information about the vehicle.

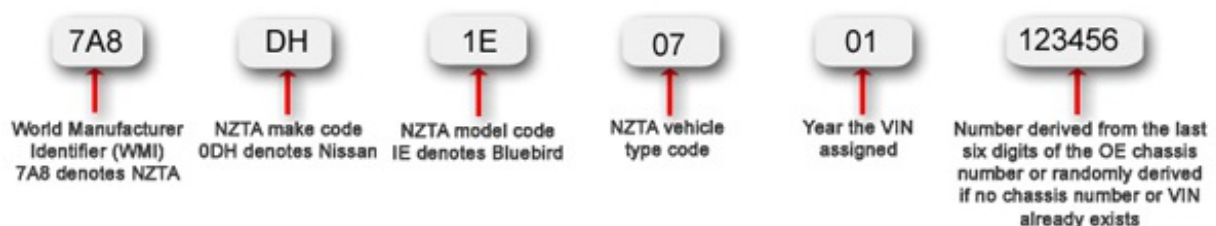
Table 1-1-1. Location of New Zealand VIN numbers

Vehicle	Permitted VIN locations
Vehicles that are not forward controlled (passenger cars and off-road passenger vehicles)	<ul style="list-style-type: none"> • In the engine compartment on the right-hand side of the firewall • In the engine compartment on the right-hand side adjacent to the front suspension mounting point • In a location inside the engine compartment approved by the NZTA for a specified vehicle or vehicle model • On the firewall or inner guards so it is visible from the front of the vehicle.
Forward-controlled vehicles (passenger vans and off-road vehicles)	<ul style="list-style-type: none"> • In the passenger compartment, on the top of the right-hand side wheel arch adjacent to the seat cushion • In the passenger compartment, on the inner panel of the right-hand A-pillar, adjacent to where the floor meets the A-pillar • In the passenger compartment on the B-pillar.
Goods vehicles and light omnibuses	<p>Vehicle with a separate chassis:</p> <ul style="list-style-type: none"> • On the outside of the chassis adjacent to the right front wheel arch, <p>Vehicle without a separate chassis:</p> <ul style="list-style-type: none"> • As specified for forward-controlled vehicles.

If the vehicle is unfamiliar, and the VIN or chassis number cannot be located, the vehicle inspector should contact the manufacturer’s agent or the local VIN issuing agent ([VTNZ](#), [VINZ](#), [NZAA](#)).

Figure 1-1-1. Structure of a VIN issued by the NZ Transport Agency

Pre-29 November 2009



Post-29 November 2009

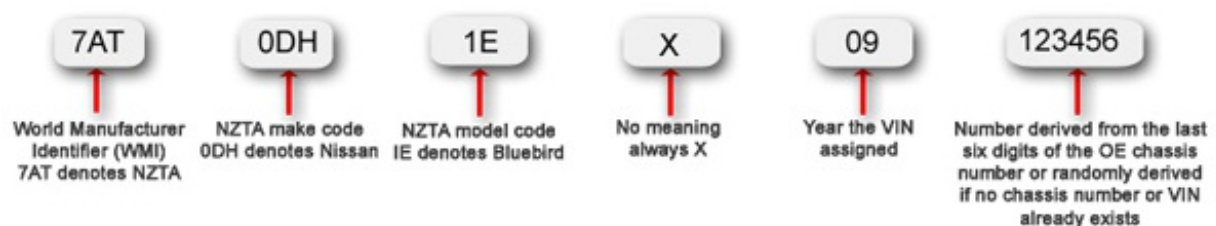
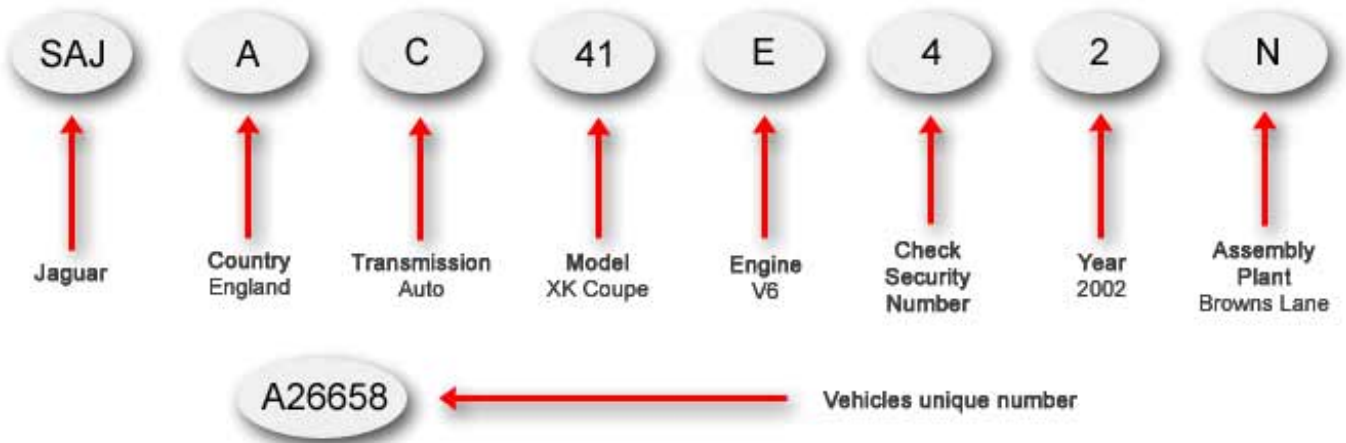
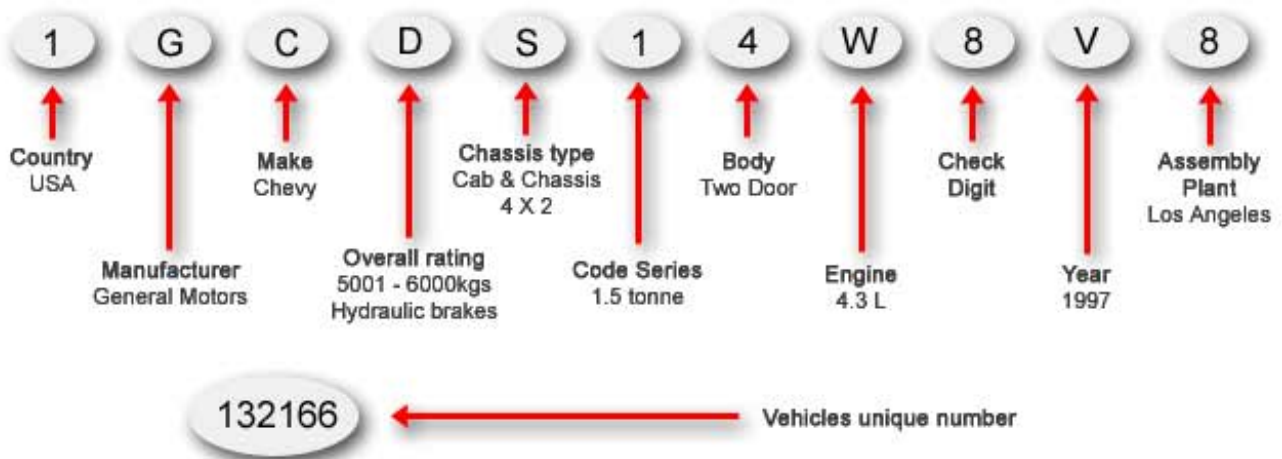


Figure 1-1-2. Structure of a VIN issued by the vehicle manufacturer

Car



Truck



Summary of legislation

Applicable legislation

- [Land Transport Rule: Vehicle Standards Compliance 2002](#).

Mandatory requirements

1. A vehicle first registered or re-registered in New Zealand before 1 April 1994 must have a chassis number or VIN.
2. A vehicle first registered or re-registered in New Zealand from 1 April 1994 must have a VIN.

Condition

3. A VIN or chassis number must not have been removed, erased, altered, defaced, obscured, destroyed, obliterated or affixed unlawfully, or be unauthorised.